

Image courtesy of Dr. Bastian Wessing and Nobel Biocare AG

Schematic showing a cross-sectional view of soft-tissue volume augmentation in the anterior maxilla using creos mucogain

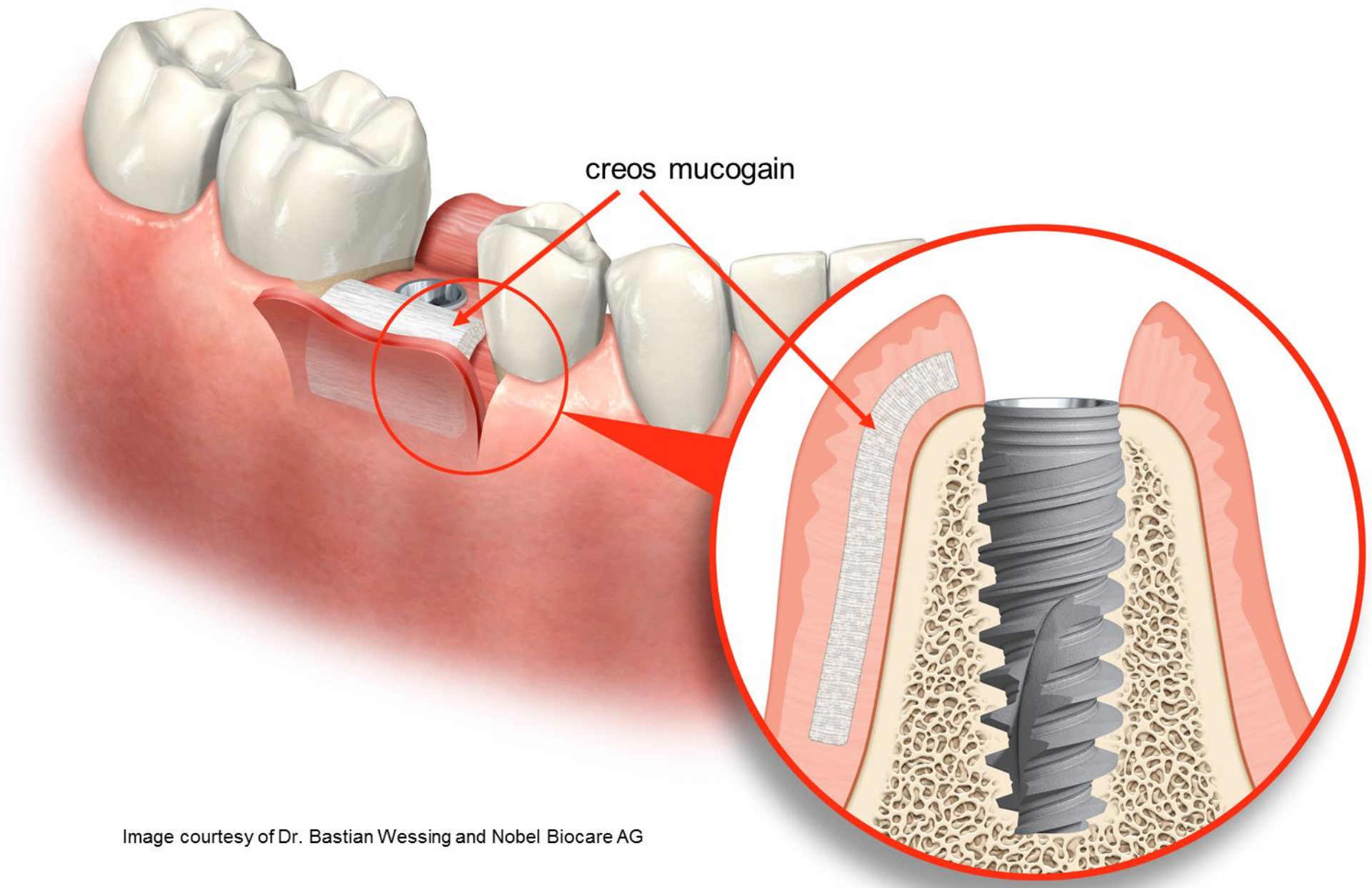


Image courtesy of Dr. Bastian Wessing and Nobel Biocare AG

Schematic showing soft-tissue volume augmentation with a submerged mucosal flap using creos mucogain

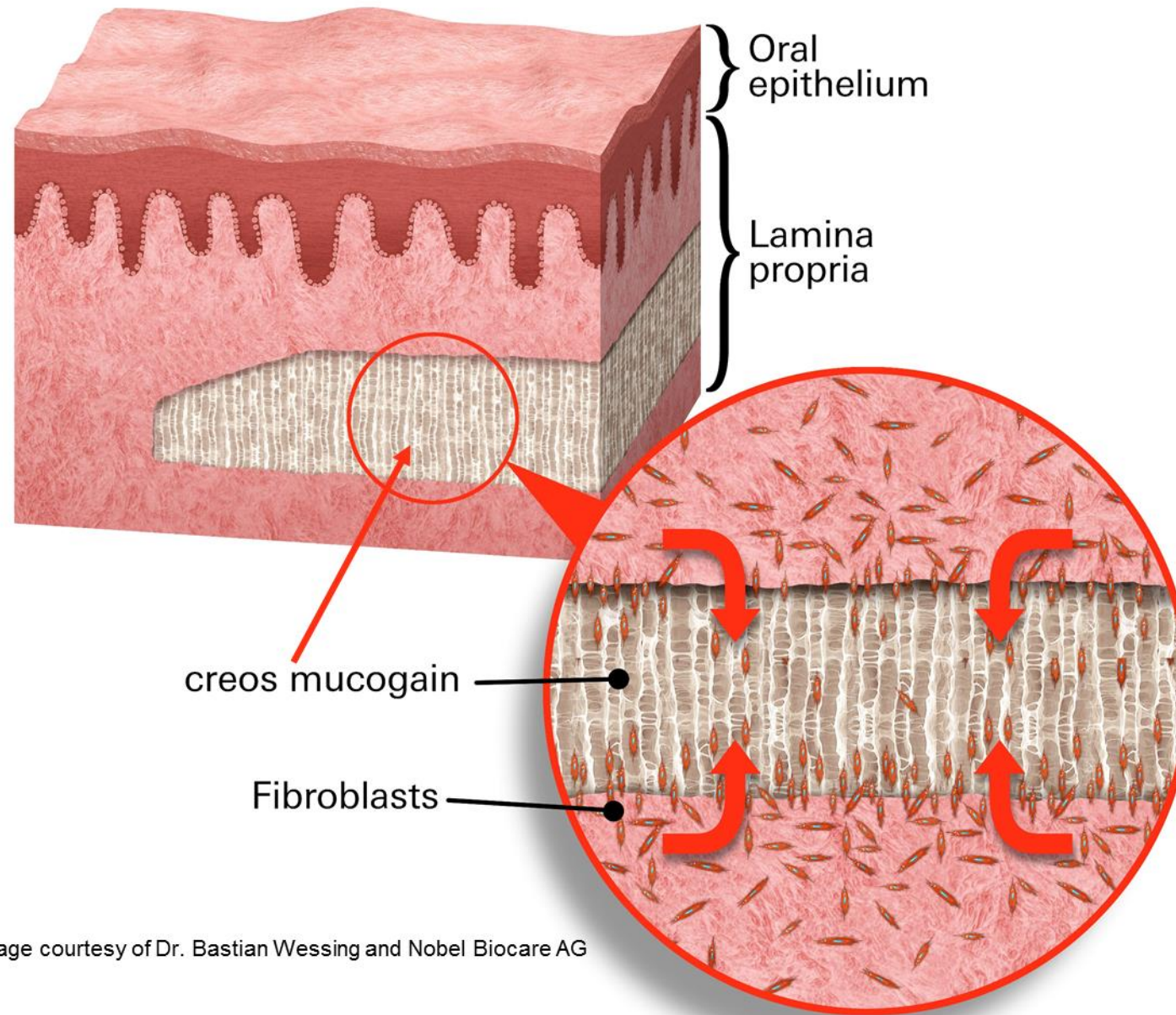


Image courtesy of Dr. Bastian Wessing and Nobel Biocare AG

Simplified schematic of fibroblast migration through the matrix in soft-tissue volume augmentation with a covered mucosal flap using creos mucogain